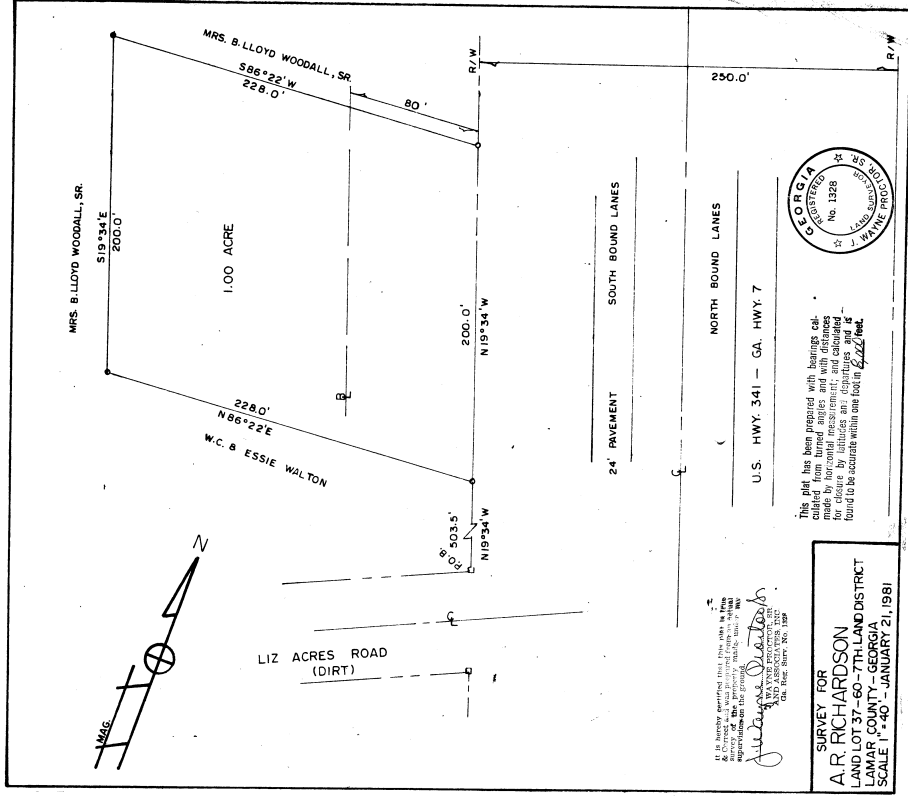


164
 GEORGIA, Lamar County
 Clerk's Office Superior Court
 Filed for Record: January 21, 1981
 Recorded in Plot Book 8
 Page 14 of 14 Pages
 Robert J. Walden, Clerk

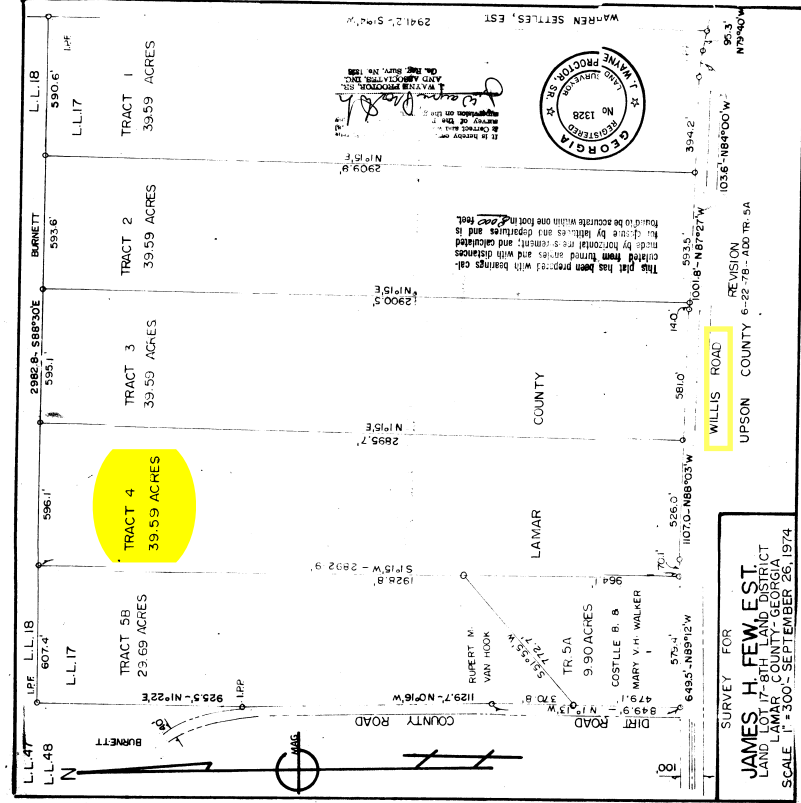


SURVEY FOR
A.R. RICHARDSON
 LAND LOT 37-60-7TH LAND DISTRICT
 LAMAR COUNTY - GEORGIA
 SCALE 1" = 40' - JANUARY 21, 1981

This plot has been prepared with bearings calculated from true bearings and with distances measured by high precision methods and found to be accurate within one foot in 42,222 feet.



164
 GEORGIA, Lamar County
 Clerk's Office Superior Court
 Filed for Record: SEP 26, 1974
 Recorded in Plot Book 8
 Page 14 of 14 Pages
 Robert J. Walden, Clerk



SURVEY FOR
JAMES H. FEW, EST.
 LAND LOT 17-8TH LAND DISTRICT
 LAMAR COUNTY - GEORGIA
 SCALE 1" = 300' - SEPTEMBER 26, 1974

This plot has been prepared with bearings calculated from true bearings and with distances measured by high precision methods and found to be accurate within one foot in 42,222 feet.

